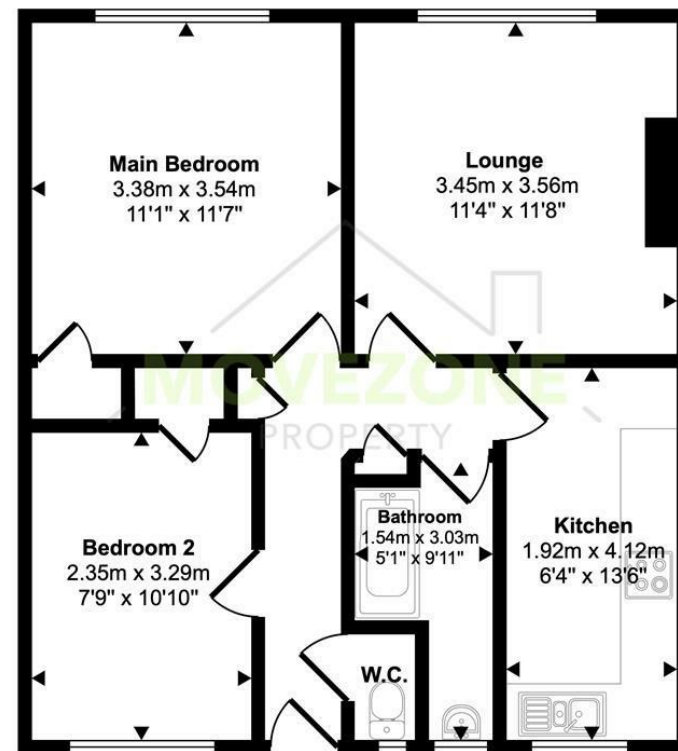


Approx Gross Internal Area
54 sq m / 584 sq ft



Floorplan

This floorplan is only for illustrative purposes and is not to scale. Measurements of rooms, doors, windows, and any items are approximate and no responsibility is taken for any error, omission or mis-statement. Icons of items such as bathroom suites are representations only and may not look like the real items. Made with Made Snappy 360.

Directions

Contact

223 Southborough Lane
Bromley
Kent
BR2 8AT

E: info@movezone.co.uk

T: 0208 3139075

<https://www.movezone.co.uk>



2 Bed
Flat
located in



Woodstock
Court Burnt
Ash Hill

London

£1,850 PCM



An excellent opportunity to rent this newly decorated two bedroom unfurnished flat with its own private entrance, located at Woodstock Court, SE12. The property is presented in fresh neutral tones throughout and is sure to let quickly – early viewing is highly recommended.

The accommodation comprises two well proportioned bedrooms, both benefiting from built in storage cupboards, a spacious lounge, a fitted kitchen with appliances, a bathroom with bath and shower, and a separate WC. Additional benefits include gas central heating, double glazing, and access to a communal play park.

Ideally positioned under a five-minute walk from Lee Station, the property offers excellent transport links into Central London. The South Circular is close by, and the Superloop service to Canary Wharf stops directly outside the building, making this an ideal home for commuters. Local shops, cafés and green spaces are all within easy reach, offering both convenience and comfort in a well connected location.

EPC Rating: C
Council Tax Band: B
Contingency Deposit: £2,134

